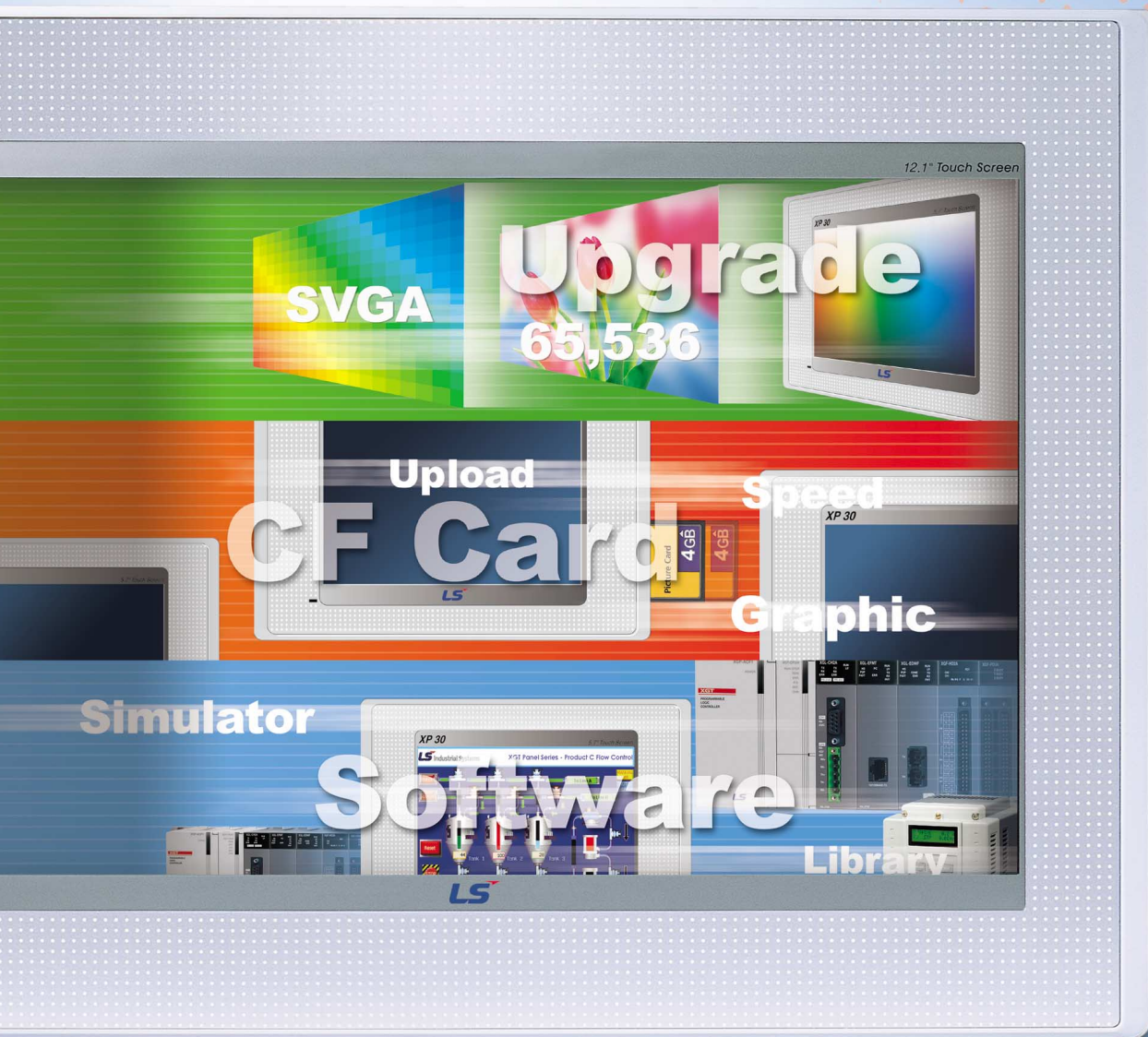


Human Machine Interface
XGT Panel **XP Series**
65,536 colors and Ethernet interface



Automation Solution





Windows CE based new HMI

XGT Panel **XP** Series

Fresh start with XP series suits
your every requirement.

neXt Generation Technology

Advanced technology for the customers.

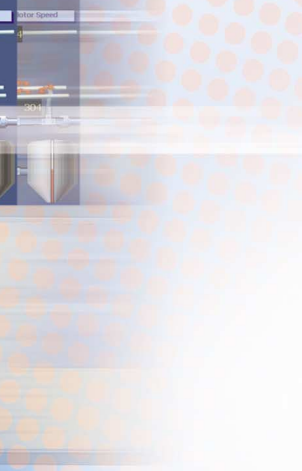
XGT Panel Series is a brand new HMI product with an intensive and advanced technology of LSIS to cope with the rapidly changing market situation. It is an innovative product having both reliability and convenience based on the Windows CE.

With the user-oriented convenience, it offers high resolution display, prompt data transmission and processing, and an user-friendly interface.

LSIS provides the Leading Solution to the automation field with the XGT Panel Series.

We are confident of our XGT Panel Series which contains high technology and our commitment to quality at the HMI market.

LEVEL	PRESSURE
324	204
999	324
1674	1054
2349	1479
3024	1904
3699	2329
4374	2754
5049	3179
5724	3604
6399	4029
7074	4454
7749	4879
8424	5304
9099	5729



Superb performance, convenient functions

- High and vivid distinction with 65,536 colors.
- Various vector symbols and high quality raster symbols.
- Support diverse file types including BMP, JPG, GIF, and WMF, etc.
- Simple movie clip effects with GIF animation.
- 10/100 BASE-T Ethernet interface.
- Convenient and easy screen editing.
- Strengthened data management (Logging, Recipe, and Alarm).
- Read function of a controller's state information (Monitoring and maintenance).
- Multi-lingual display up to 4 languages and easy switching.
- Offline program simulation.
- Tag function of the HMI S/W (Easy to change the address of the graphic objects).
- USB host for the use of peripheral devices (Mouse, keyboard, printer, etc.)
- Sufficient memory space for screen saving (10MB).

XGT Panel *XP* Series Line Up

A new and improved Windows CE-based HMI—

12.1" XP80-TTA



TFT color
SVGA (800×600)
65,536 colors

External Interface



Ethernet I/F



Serial I/F(RS-232C)



Serial I/F(RS422/485)



USB I/F



CF card I/F



Expansion port

10.4" XP70-TTA



TFT color
VGA (640×480)
65,536 colors

External Interface



Ethernet I/F



Serial I/F(RS-232C)



Serial I/F(RS422/485)



USB I/F



CF card I/F



Expansion port

8.4" XP50-TTA



TFT color
VGA (640×480)
65,536 colors

External Interface



Ethernet I/F



Serial I/F(RS-232C)



Serial I/F(RS422/485)



USB I/F



CF card I/F



Expansion port

Speed

XP series has Ethernet interface for the rapid transmission of data. XP series communicates with some PLCs and transmit data promptly through the Ethernet interface.



Expression

XP series supports 65,536 full color display and its mass storage of the flash memory offers best quality.



Variety

XP series supports not only BMP, JPG graphic file types but also WMF, GIF file for making a movie clip drawing on the screen.



SVGA

Upgrade

65,536



XGT Panel **XP** Series

5.7"

XP30-TTA



TFT color
QVGA (320×240)
65,536 colors

External Interface



Ethernet I/F



Serial I/F(RS-232C)



Serial I/F(RS422/485)



USB I/F



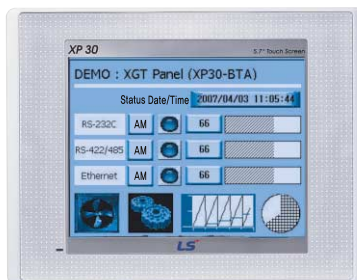
CF card I/F



Expansion port

5.7"
MONO

XP30-BTA



STN MONO (8-bit Gray)
QVGA (320×240)

External Interface



Ethernet I/F



Serial I/F(RS-232C)



Serial I/F(RS422/485)



USB I/F



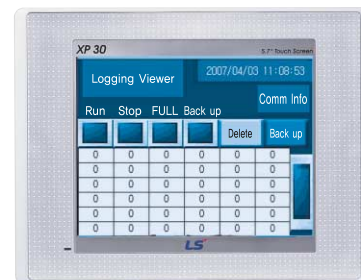
CF card I/F



Expansion port

5.7"
Economy MONO

XP30-BTE



Soon

STN MONO Economy (8-bit Gray)
QVGA (320×240)

External Interface



USB I/F



Serial I/F(RS-232C)



Serial I/F(RS422/485)

Multi-Language

XP series can display many languages which are supported on Microsoft Windows. Real-time conversion of four languages is available during run.



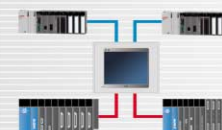
Specialization

XP series strengthens advanced features such as Logging, Recipe, Alarm, Script, and Scheduler. It helps users for the liberal and practical use.



Network

XP series enables users to implement data communication with several controllers at one time. The maximum 4 PLCs are connectable to a XP machine.

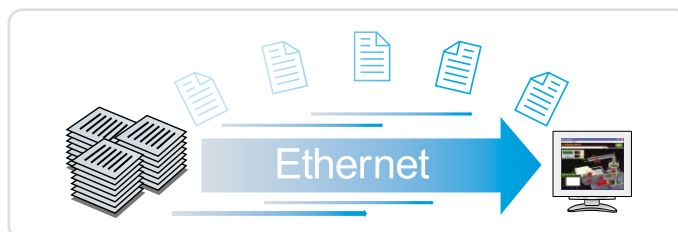


XGT Panel XP Series Feature

Data processing

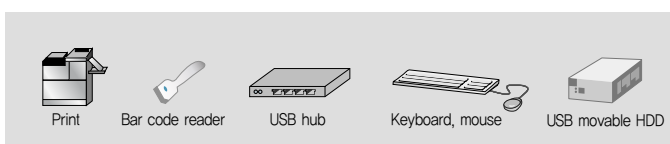
Faster transmission of mass storage data

- XP series' transmission speed is improved with the Ethernet interface. It is faster(10/100Mbps) than RS-232C interface (115Kbps). XP series includes a 10 MB memory, so it can offer advanced features such as upload/download drawing data, Logging, Alarm, and Recipe. XP series supports GIF, WMF file type as well as BMP, JPG. It makes you easy to draw.



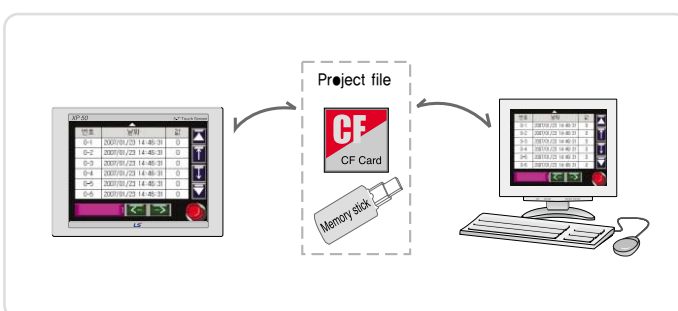
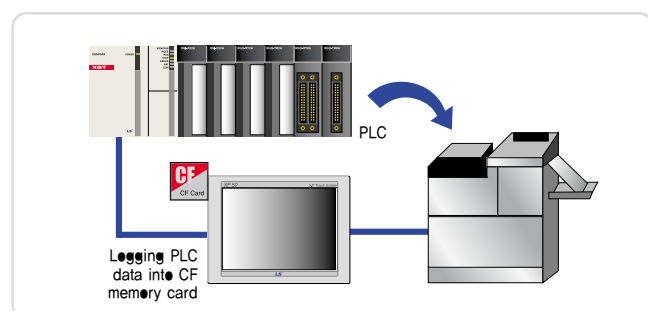
Easy accessible USB host

- 2channels of USB interfaces are installed as a host. XP series supports diverse devices connecting to the USB interface. We develop and upgrade drivers for devices continuously.



CF memory card and USB memory

- You can save the PLC data to a CF memory card or a USB memory. It can be converted into CSV file type.
- After saving a drawing file of the screen to a CF memory card or a USB memory, you can directly copy it to the XGT Panel without cabling. For the multiple XGT Panels, you need only one CF memory card or one USB memory to configure the panels by copying its setting.



More image libraries and graphic files

- XP supports various graphic file types, such as WMF(clip art), GIF, JPG, and BMP, that makes you easy to draw up switches, lamps, and input/output devices.
- More graphic file types which are collected from the Internet can help users to compose a screen.

	Vector	Raster
Example		
Features	<ul style="list-style-type: none"> It expresses pictures as geometrical figures (dots, circles, lines, etc.) It holds the shapes during enlarging and reducing. It is able to change a frame, a background, a foreground, and a pattern. It produces smaller file sizes than raster files. 	<ul style="list-style-type: none"> It stores information of pictures by pixel by pixel. It is able to describe a vivid picture.

Display

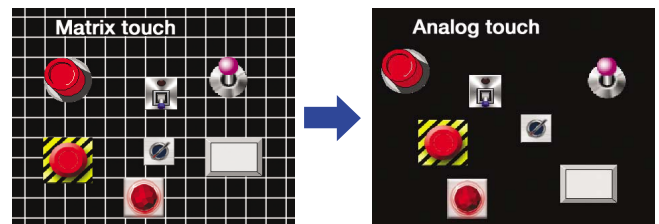
High resolution display

- TFT LCD, with 65,536 colors, can display high-resolution screen. It provides wide viewing angle for the better sight. For the reliability of the product, it adopts a high quality industrial LCD.



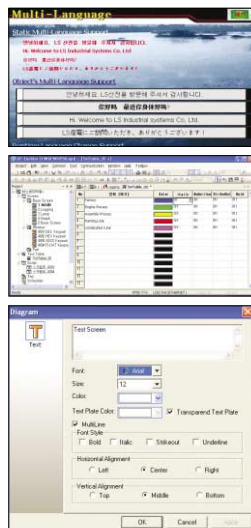
Analog touch panel

- Analog touch panel eliminates scale marks to improve the resolution as compared to the matrix touch panel. It adopts an analog resistive touch panel for the better visibility and the free disposition of objects. It helps free locating of the objects.



Multi-language support

- It offers a real-time conversion of four languages and various choices of language for designers. You can switch the languages which you want to use during the operation with the pre-recorded string table. It offers the languages which are supported on Microsoft Windows, such as Chinese(prc), Chinese(Taiwan), Danish, German, English, Finnish, French, Greek, Italian, Korean, Norwegian, Polish, Portuguese, Russian, Swedish, Spanish, Hungarian, etc.



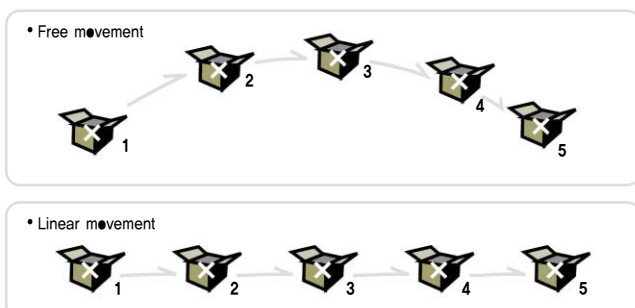
Various fonts support

- You can use a Microsoft Windows font by transmitting it to the HMI. You can adjust font style (Italic, Bold, Underline). It provides a true type font and various size. Unicode fonts can help users who want to compose a diverse screen.



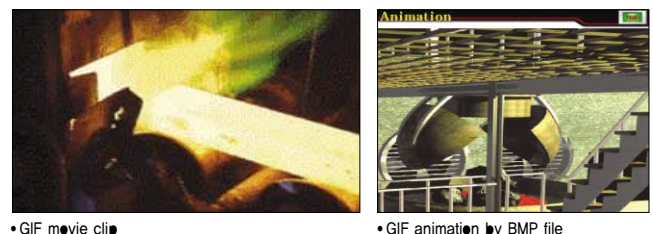
Movement of objects

- It displays components of fixed values or word devices on the screen. Predefined images as components are usable. It provides a free movement with a user-defined path, a linear movement, and a device movement on the X-Y coordinates.



GIF animation

- You can use GIF animation to take effects according to the state of specified bit. You can make and add a movie clip of the actual spot to inform users accurately. (A movie clip file can be produced using a commercial GIF animator program.)



XGT Panel XP Series Feature

Project Printing

Alarm

Advanced

History alarm

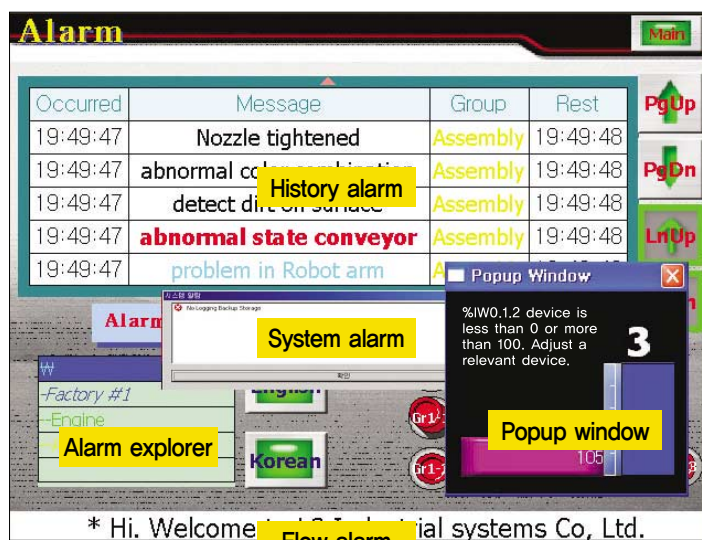
It saves alarmed contents into a history file. You can classify the alarms in detail into the maximum 8 upper and lower class groups or alarm lists. Through the alarm explorer, you can choose some alarms in detail, you can create a window which is connected to the alarms.

Flow alarm

It displays a current alarm on the lower position of the screen for the rapid response to users. Flowing alarm can be configured to use only with a specific condition. You can apply it to transmit company or device information.

System alarm

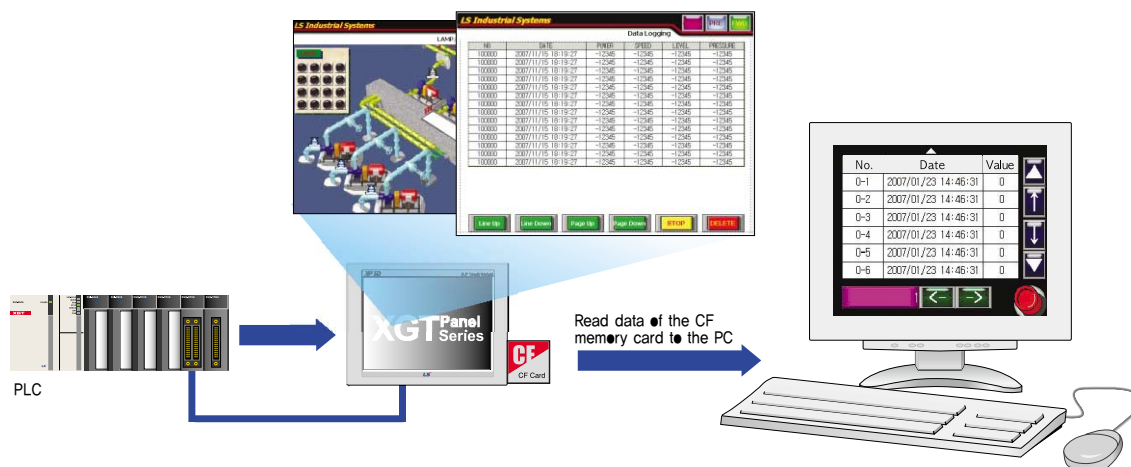
If a serious fault or a trouble of the HMI occurs, the system alarm informs users.



Logging

Advanced

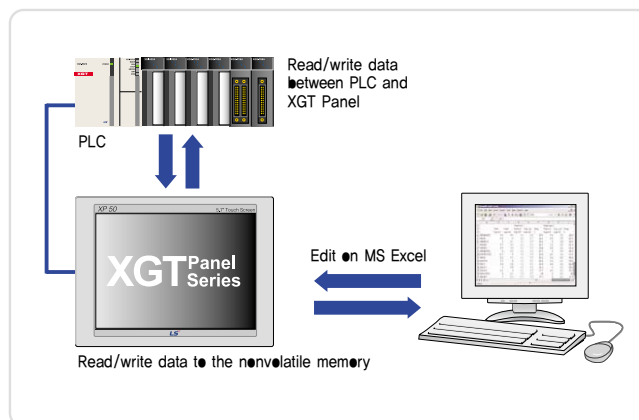
It offers a cyclic logging which operates repeatedly according to the time and a device status, and a conditional logging which works under the condition of the device. You can create logging areas (condition) up to 32, and each size of the area is up to 256Kbyte. It is available to save the maximum 32 Words(cf. 32 bits for the bit logging) by one logging. Logging is basically saved on the internal SRAM (256Kbyte), and you can run a back up to a CF memory, a USB memory and a movable HDD, etc. You can verify the logging data at the XGT Panel through the logging view object. It enables to switch the files to CSV type to edit through the Microsoft Excel.



Recipe

Advanced

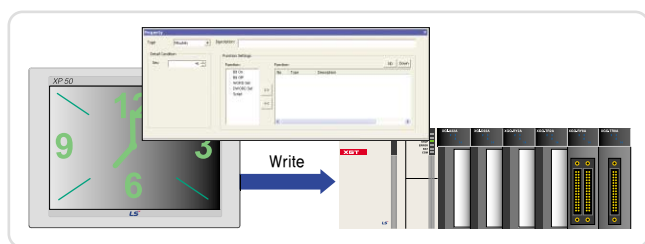
- Recipes provide an easy method for operators and users to change the value of hundreds of settings in automation devices. Backup memory is installed, it makes it possible to use the recipe function to transfer setting values to other equipment. It is able to register up to 32 recipes at the XP-Builder. The maximum 100 Word/Dword devices and 16 data blocks are able to assign in each recipe. Recipe data is saved in the nonvolatile memory of the XP series. It maintains the latest data when the power is shut off. You can register and edit the recipe data through the XGT Panel or Microsoft Excel.



Scheduler

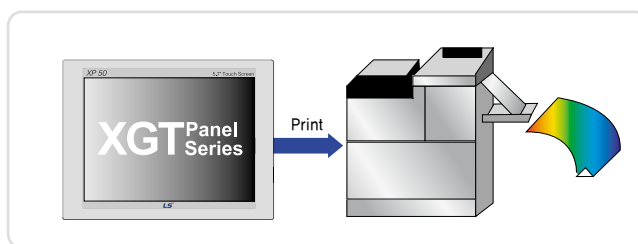
Advanced

- Scheduler appoints operations and times to do the operation on the specified time. Bit On/Off, setting a Word value, and a script operation are available. Each scheduler can assign operations up to 8. Schedulers can be produced up to 32.



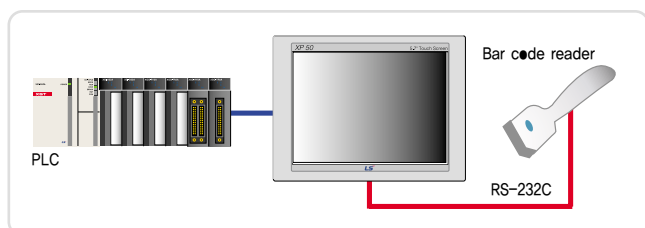
Print

- You can print a screen or a history of alarm events from the HMI. It is available to connect to a printer with a USB port.



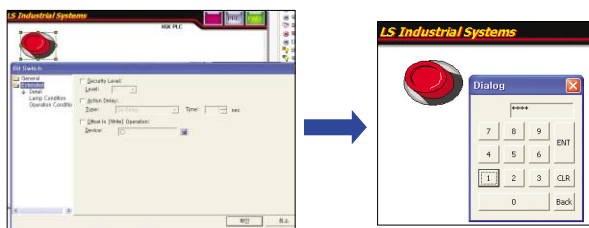
Bar code scan

- ASCII data which is inputted by a bar code scanner can be saved into a user-defined PLC or an internal memory of the XGT Panel. User can set a completion bit to verify whether the XGT Panel read correct data. The bar code communication operates only with a built-in RS-232C interface of the XGT Panel.



Security


- When you operate the PLC control with Objects such as switches, input and output objects, you can prescribe the security level to the authorized users only. Total 10 security levels are supported, and a low level password can access to a higher level. After an approval of the security level, the session is only maintained during a period of time.

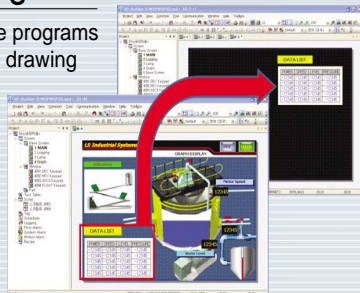


Development Tool : XP-Builder

XP-Builder Functions

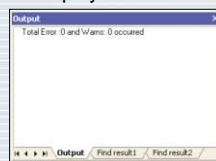
Multi-thread program

-  You can run multiple programs at one time and use drawing data from another program.



Debugging program

- You can verify some errors which is happened to the data at the output window.
- Display details of the errors.



Cross reference

- ➡ Display devices and tags which are in use.

[illegible]

Edit program : XP-Builder

Project

- Add and edit screens and special functions of the project.

Data view

- Display the objects which is used on a current screen.
- Show the property window by double click.

Output bar

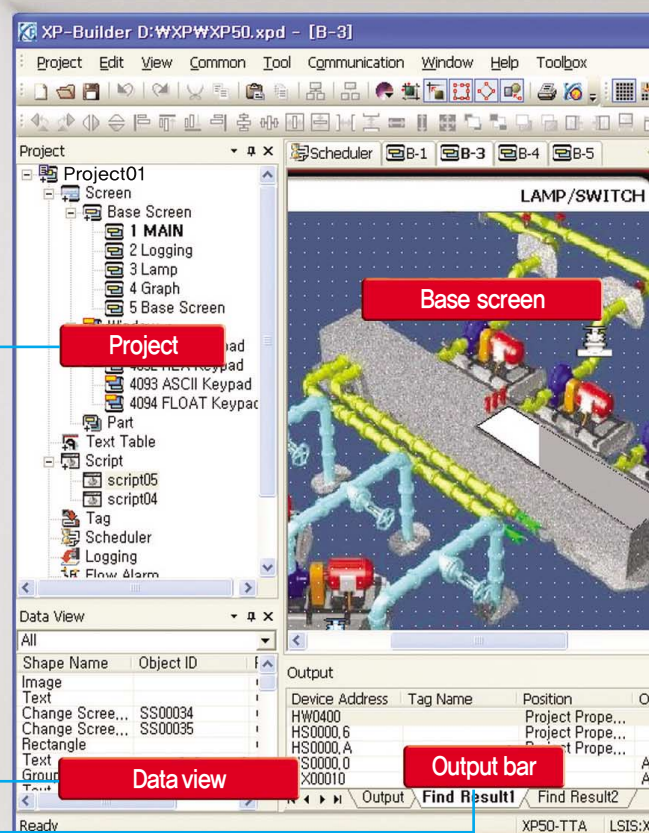
- Output errors about the data and display search results.
- Display details of errors.

Toolbox

- ➡ Draw objects and diagrams.

Library

- Categorized libraries are displayed and the preview is supported.
- Easy register and deletion of the user library.
- Drag & Drop operation.



Tag

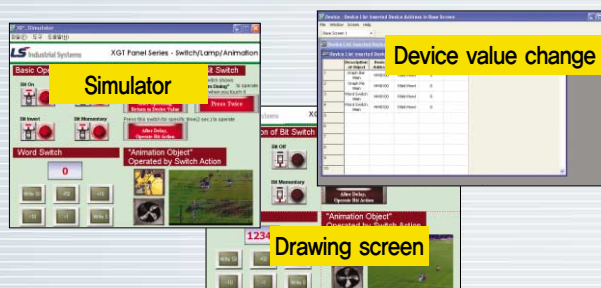
- ❑ User can rename a device address to use it as an object.
- ❑ If you assign a tag to the set up device of an object, you can change the addresses of devices at a time.
- ❑ It is available to register up to 10,000.

번호	이름	등록된 데이터	주소	장치
1	SourceA	BIT	HW0000.F	
2	SourceB	BIT	HW0000.F	
3	SourceA_V1	BIT	HW0000.E	
4	SourceA_V2	BIT	HW0000.E	
5	SourceA_V3	BIT	HW0000.E	
6	SourceA_V4	BIT	HW0000.E	
7	SourceB_V1	BIT	HW0000.E	
8	SourceB_V2	BIT	HW0000.E	
9	SourceB_V3	BIT	HW0000.E	
10	SourceB_V4	BIT	HW0000.E	

Simulation

Off-line program simulation

- ❑ You can confirm the drawing data on a PC without a XGT Panel.
- ❑ Device monitoring and operation can be checked on a PC.
- ❑ The simulator supports same operations as a XGT Panel.
- ❑ Data errors and normal operations could be checked before XP-Builder transmits the drawing data to the HMI.



Script

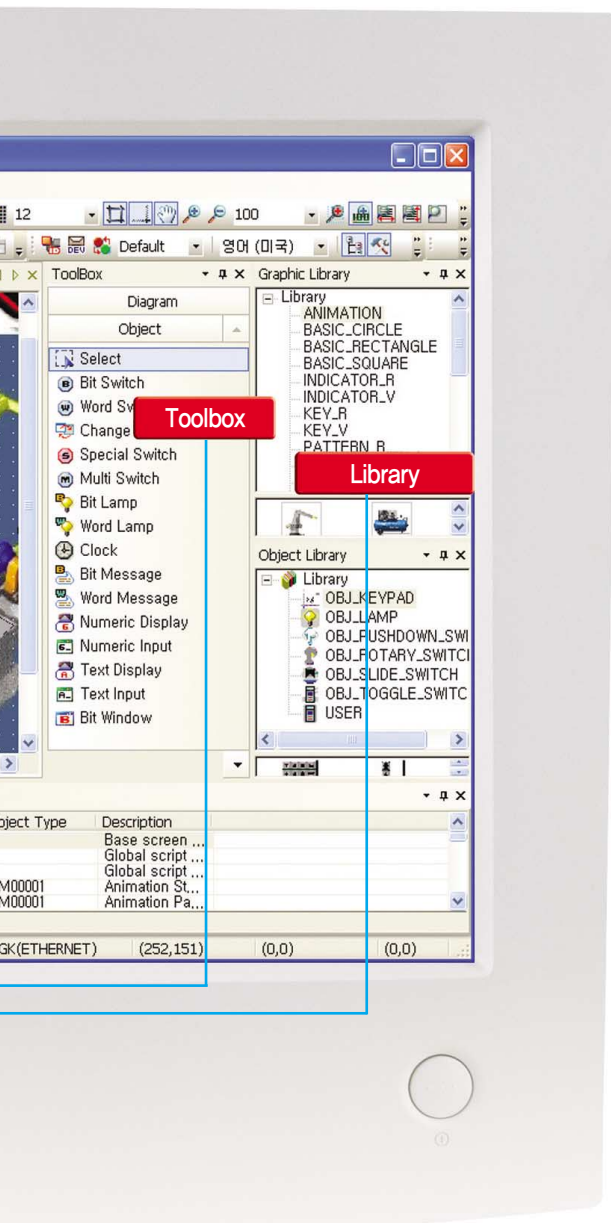
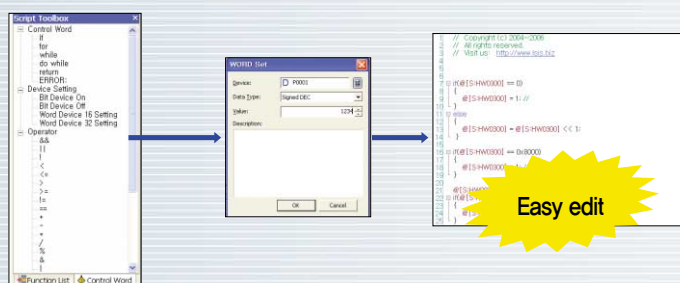
Flexible script language

- ❑ Script language can supplement the offered object function to draw the data.
- ❑ Script language is a structured language such as C programming language for the convenience of users.
- ❑ Script language with complex arithmetic operations and various functions can reduce a load of external controllers.
- ❑ Grammar inspection can validate the script languages.

Various script use

- ❑ XP-Builder has various script usages such as global script, object script, etc.
- ❑ Global script operates with On/Off signal of an assigned device. It is able to run a script operation by periods using a special device.
- ❑ The object script is available to do a target device operation of the object.
- ❑ Script can be operated at the moment when a screen is opened(or closed).

Useful script toolbox and error inspection.



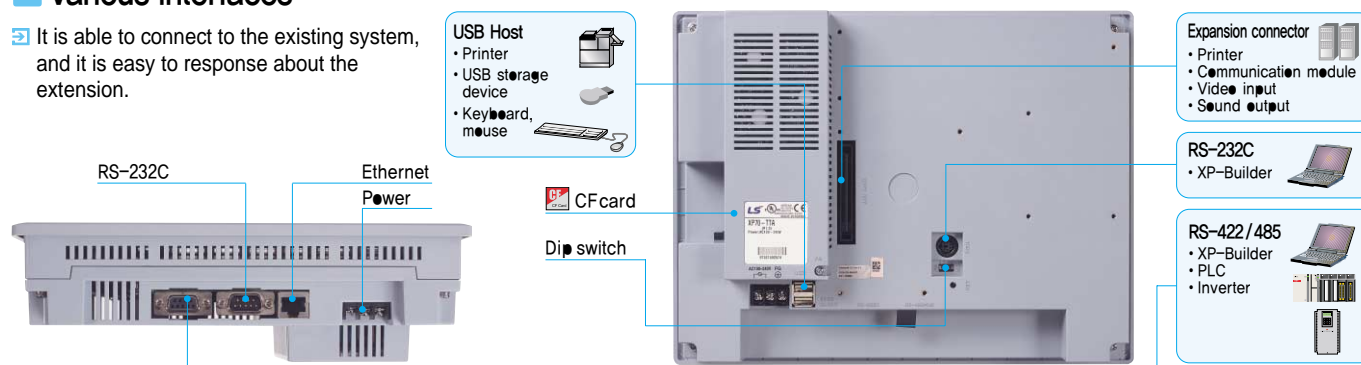
XGT Panel *XP* Series Specification

Interface and system organization

XGT Panel provides reliable quality and responsible technology

Various interfaces

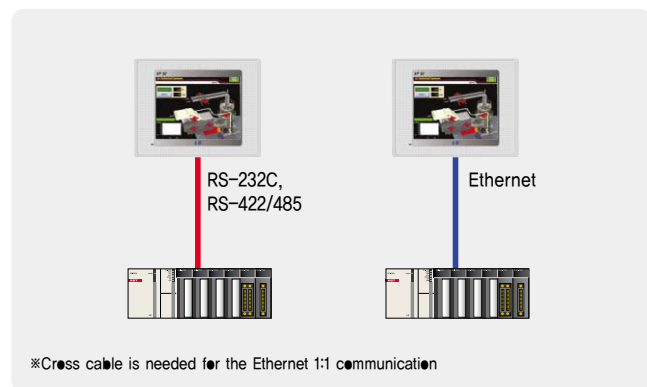
It is able to connect to the existing system, and it is easy to response about the extension.



System organization

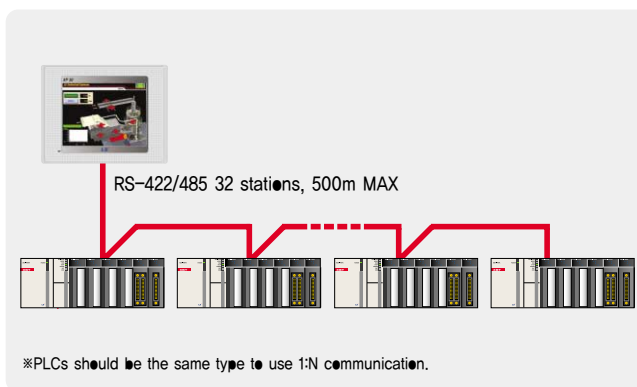
1 : 1 Serial / Ethernet communication

One PLC to one XGT Panel



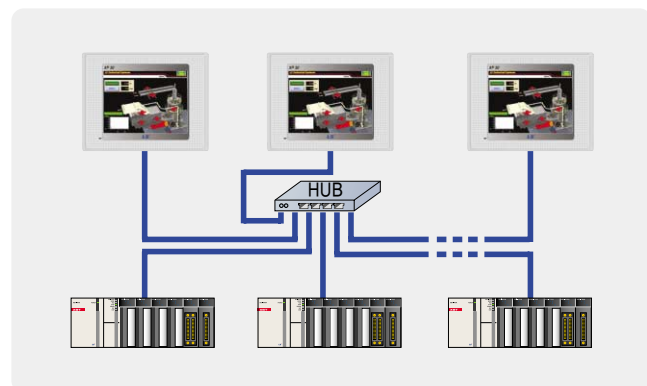
1 : N Serial communication

Multiple PLCs to one XGT Panel



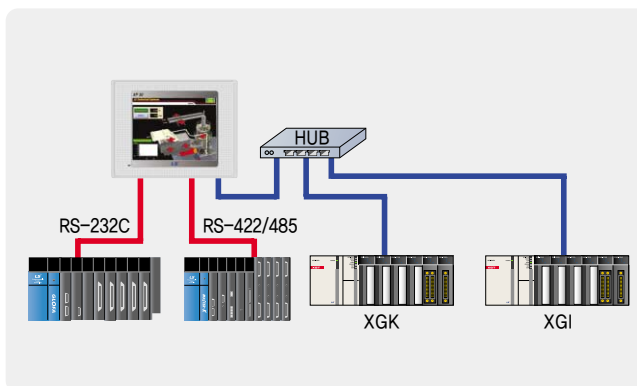
N : M (Ethernet communication)

Multiple PLCs to multiple XGT Panels



Simultaneous communication with 4 controllers

4 kinds of PLCs to one XGT Panel

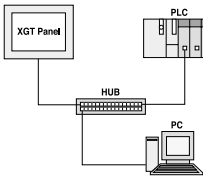

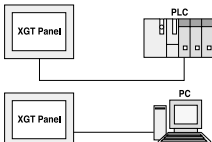


Cable

The technology began to offer better operating environment

Cable standards and wiring method


Ethernet cable standards and wiring

Item	Description																																
Cable standard	<ul style="list-style-type: none">Type: UTP / FTP / STP cableStandard: CAT.5 / Enhanced CAT.5 / CAT.6																																
Direct cable	Communicate with a PC or a PLC/Controller through a hub.																																
	<div><table><tr><td>1</td><td>wh/or</td><td>wh/or</td><td>1</td></tr><tr><td>2</td><td>or</td><td>or</td><td>2</td></tr><tr><td>3</td><td>wh/gm</td><td>wh/gm</td><td>3</td></tr><tr><td>4</td><td>blu</td><td>blu</td><td>4</td></tr><tr><td>5</td><td>wh/blu</td><td>wh/blu</td><td>5</td></tr><tr><td>6</td><td>gm</td><td>gm</td><td>6</td></tr><tr><td>7</td><td>wh/brn</td><td>wh/brn</td><td>7</td></tr><tr><td>8</td><td>brn</td><td>brn</td><td>8</td></tr></table><div><p>12345678</p><p>← Ethernet Jack</p></div></div>	1	wh/or	wh/or	1	2	or	or	2	3	wh/gm	wh/gm	3	4	blu	blu	4	5	wh/blu	wh/blu	5	6	gm	gm	6	7	wh/brn	wh/brn	7	8	brn	brn	8
1	wh/or	wh/or	1																														
2	or	or	2																														
3	wh/gm	wh/gm	3																														
4	blu	blu	4																														
5	wh/blu	wh/blu	5																														
6	gm	gm	6																														
7	wh/brn	wh/brn	7																														
8	brn	brn	8																														
Cross cable	Connect with a PC or a PLC/Controller directly (1:1 connection).																																
	<div><table><tr><td>1</td><td>wh/or</td><td>wh/gm</td><td>1</td></tr><tr><td>2</td><td>or</td><td>gm</td><td>2</td></tr><tr><td>3</td><td>wh/gm</td><td>wh/or</td><td>3</td></tr><tr><td>4</td><td>blu</td><td>blu</td><td>4</td></tr><tr><td>5</td><td>wh/blu</td><td>wh/blu</td><td>5</td></tr><tr><td>6</td><td>gm</td><td>or</td><td>6</td></tr><tr><td>7</td><td>wh/brn</td><td>wh/brn</td><td>7</td></tr><tr><td>8</td><td>brn</td><td>brn</td><td>8</td></tr></table></div>	1	wh/or	wh/gm	1	2	or	gm	2	3	wh/gm	wh/or	3	4	blu	blu	4	5	wh/blu	wh/blu	5	6	gm	or	6	7	wh/brn	wh/brn	7	8	brn	brn	8
	1	wh/or	wh/gm	1																													
2	or	gm	2																														
3	wh/gm	wh/or	3																														
4	blu	blu	4																														
5	wh/blu	wh/blu	5																														
6	gm	or	6																														
7	wh/brn	wh/brn	7																														
8	brn	brn	8																														


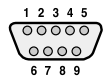
NOTE

- 1) Ethernet setting
 - Ethernet setting is on the XGT Panel.
 - Communication parameters with a PLC/controller are set up on the XP-Builder.
- 2) 1:1 connection
 - Under the conditions that is impossible to use a LAN, a one-to-one connection with a cross cable is suited to send/receive a project data.
- 3) Making a cable
 - If a Lock part of the Ethernet jack is damaged, it cannot be fixed to a RJ45 connector (Ethernet connector). It occurs a contact badness.
 - A Plug Cover is recommended.

Tool cable standards and wiring

Item	Description																																																			
Cable standard	<ul style="list-style-type: none">• Name: PMC-310S (Download cable)• Length: A soft tube type 1m																																																			
Structure and wiring	Direct connection to a PC																																																			
	<div></div> <div><table><tr><td>1</td><td></td><td>CD</td><td>1</td></tr><tr><td>2</td><td>RD</td><td>RD</td><td>2</td></tr><tr><td>3</td><td>SG</td><td>SD</td><td>3</td></tr><tr><td>4</td><td></td><td></td><td>4</td></tr><tr><td>5</td><td></td><td>SG</td><td>5</td></tr><tr><td>6</td><td></td><td>DSR</td><td>6</td></tr><tr><td></td><td></td><td>RTS</td><td>7</td></tr><tr><td></td><td></td><td>CTS</td><td>8</td></tr><tr><td></td><td></td><td></td><td>9</td></tr></table><div><div>XGT Panel (Male)</div><div><table><tr><td>5</td><td>3</td><td>6</td></tr><tr><td>1</td><td>4</td><td>2</td></tr></table></div></div><div><div>PC (Female)</div><div><table><tr><td>1</td><td>6</td></tr><tr><td>2</td><td>7</td></tr><tr><td>3</td><td>8</td></tr><tr><td>4</td><td>9</td></tr><tr><td>5</td><td></td></tr></table></div></div></div>	1		CD	1	2	RD	RD	2	3	SG	SD	3	4			4	5		SG	5	6		DSR	6			RTS	7			CTS	8				9	5	3	6	1	4	2	1	6	2	7	3	8	4	9	5
1		CD	1																																																	
2	RD	RD	2																																																	
3	SG	SD	3																																																	
4			4																																																	
5		SG	5																																																	
6		DSR	6																																																	
		RTS	7																																																	
		CTS	8																																																	
			9																																																	
5	3	6																																																		
1	4	2																																																		
1	6																																																			
2	7																																																			
3	8																																																			
4	9																																																			
5																																																				

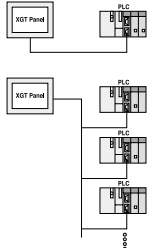
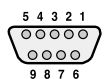
RS-232C cable standards and wiring

Item	Description																		
Cable standard	<ul style="list-style-type: none"> (UL) Style 2464 AWG24 cable is recommended. Max cable length is 15m. Shielded cables are recommended. 																		
Structure and wiring	<p>Connect to PLC or Controller (1:1).</p>  <ul style="list-style-type: none"> Connector pin of the XGT Panel D-Sub 9P, Male connector <table border="1"> <tr><td>1</td><td></td></tr> <tr><td>2</td><td>RD</td></tr> <tr><td>3</td><td>SD</td></tr> <tr><td>4</td><td></td></tr> <tr><td>5</td><td>SG</td></tr> <tr><td>6</td><td></td></tr> <tr><td>7</td><td></td></tr> <tr><td>8</td><td></td></tr> <tr><td>9</td><td></td></tr> </table> 	1		2	RD	3	SD	4		5	SG	6		7		8		9	
1																			
2	RD																		
3	SD																		
4																			
5	SG																		
6																			
7																			
8																			
9																			

NOTE

- 1) Communication setting
 - Communication parameters with a PLC/controller are set up on the XP-Builder.
 - Refer to the communication user manual about the communication wiring with a PLC/controller.
 - XGT Panel does not support a flow control.
- 2) Making a cable
 - Under the conditions that is impossible to use a LAN, a one-to-one connection with a cross cable is suited to send/receive a project data.
 - Make a cable meet PLC/controller's standard requirements.

RS-422/485 cable standards and wiring

Item	Description																		
Cable standard	<ul style="list-style-type: none"> (UL) Style 2464 AWG22 cable is recommended. Max cable length is 500m. Shielded cables are recommended. 																		
Structure and wiring	<p>Connect to PLC or Controller (1:1).</p>  <ul style="list-style-type: none"> Connector pin of the XGT Panel D-Sub 9P, Female connector <table border="1"> <tr><td>1</td><td></td></tr> <tr><td>2</td><td></td></tr> <tr><td>3</td><td>SG</td></tr> <tr><td>4</td><td>TX+</td></tr> <tr><td>5</td><td>TX-</td></tr> <tr><td>6</td><td>SG</td></tr> <tr><td>7</td><td></td></tr> <tr><td>8</td><td>RX+</td></tr> <tr><td>9</td><td>RX-</td></tr> </table> 	1		2		3	SG	4	TX+	5	TX-	6	SG	7		8	RX+	9	RX-
1																			
2																			
3	SG																		
4	TX+																		
5	TX-																		
6	SG																		
7																			
8	RX+																		
9	RX-																		

NOTE

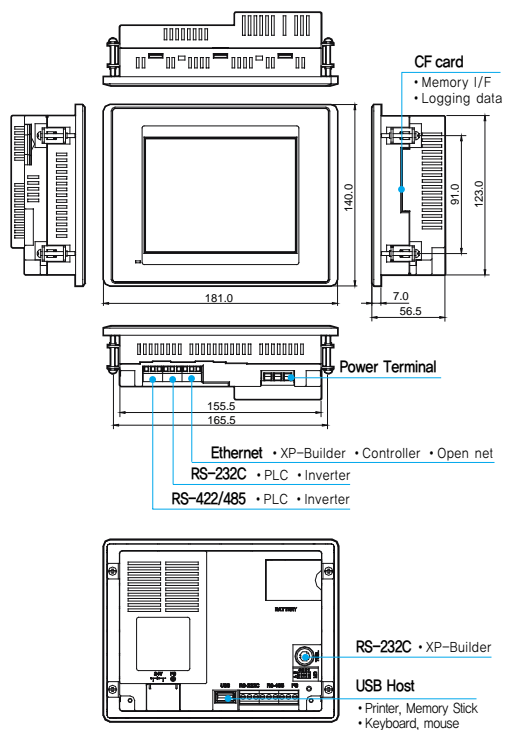
- 1) Communication setting
 - Communication parameters with a PLC/controller are set up on the XP-Builder.
 - Refer to the communication user manual about the communication wiring with a PLC/controller.
 - Set up a terminal resistance using a dip switch.
- 2) Making a cable
 - A cable should be produced as a male type because the XGT Panel's connector is a female type.
 - Connect the 4th(TX+) to the 8th(RX+) and the 5th(TX-) to the 9th(RX-) to make a RS-485 cable.

DIP switch	Description of the switch
1	No use
2	A Normal operation (Default)
	B Update Windows CE
3	A Watchdog On (Default)
	B Watchdog Off
4	A RS-422/485 terminal resistance (120Ω)
	B No RS-422/485 terminal resistance

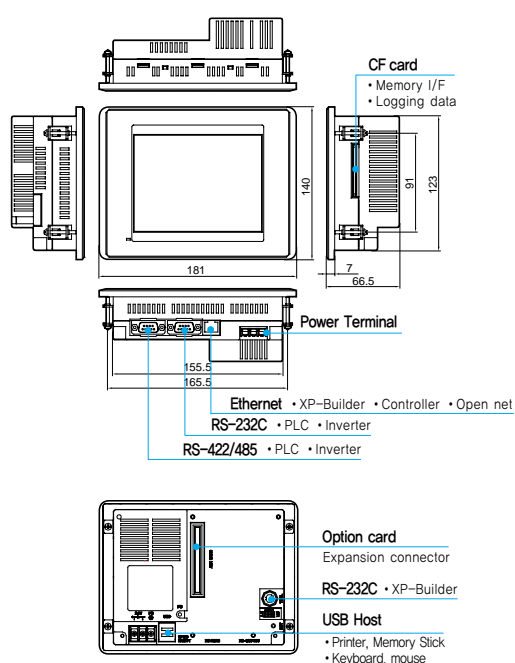
XGT Panel *XP* Series Specification

Dimension and name

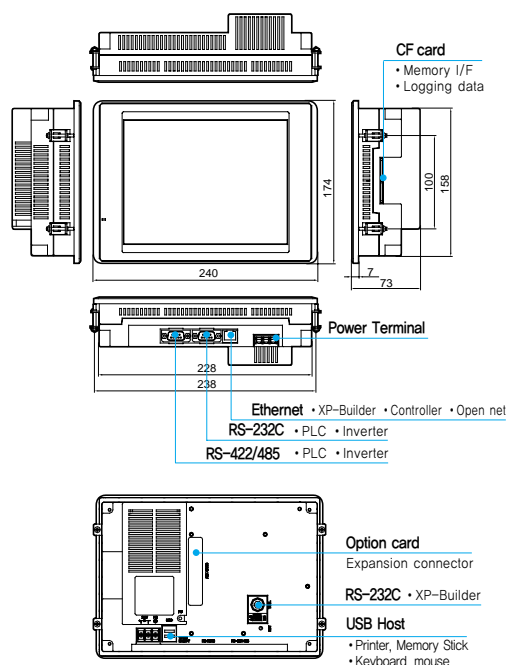
XP30-BTE



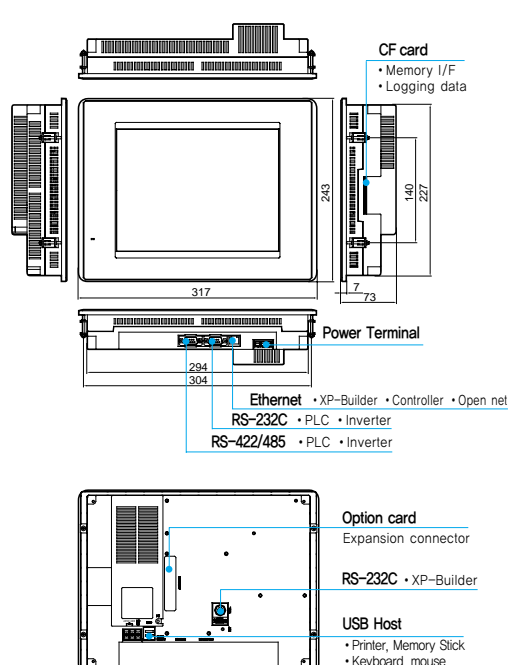
XP30-BTA / TTA



XP50-TTA



XP70-TTA / XP80-TTA



EXTENSION TOTAL SOLUTION TRANSMISSION

General information

No.	Item	Description	Standard
1	Ambient temperature	0℃~+50℃	
2	Storage temperature	-20℃~+60℃	
3	Ambient humidity	10~85% RH, without dew condensation	
4	Storage humidity	10~85% RH, without dew condensation	
5	Vibration resistance	Occasional vibration	10 times each direction (X, Y, and Z)
		Frequency	
		Acceleration	
		Amplitude	
		5 ≤ f < 9Hz	
		9 ≤ f ≤ 150Hz	
		Continuous vibration	
		Frequency	
		Acceleration	
		Amplitude	
		5 ≤ f < 9Hz	
		9 ≤ f ≤ 150Hz	
6	Shock resistance	* Maximum shock acceleration: 147% (15g) * Authorization time: 11ms * Pulse waveform: Half-sine wave (3 times each of X, Y, and Z)	IEC 61131-2
7	Noise resistance	Square wave impulse noise	AC: ±1,500V DC: ±1,000V
		Electrostatic discharge	Voltage: 6kV (Contact discharge)
		Radiated electromagnetic field noise	27 ~ 500MHz, 10V/m
		Fast transient / Burst noise	Power module / Digital IO, Analog IO, Communication interface
8	Operating ambience	Free from corrosive gases and excessive dust	2kV / 1kV
9	Altitude	Up to 2,000m (6,562ft)	
10	Pollution degree	Less than equal to 2	
11	Cooling method	Air-cooling	

Specification

Item		XP30-BTE/DC	XP30-BTA/DC	XP30-TTA/DC	XP50-TTA/DC	XP70-TTA/DC XP70-TTA/AC	XP80-TTA/DC XP80-TTA/AC
		Mono		Color			
Display description		Mono Blue LCD			TFT Color LCD		
Display Size (inch)		5.7"			8.4"	10.4"	12.1"
Resolution		320×240			640×480		800×600
Color		8-bit Gray Scale			65,536 color		
Backlight		CCFL (whole LCD), auto On/Off (50,000hr)			CCFL (interchangeable), auto On/Off (50,000hr)		
Contrast		Adjustable			Fixed		
Luminance		260cd/ m²			400cd/ m²	480cd/ m²	430cd/ m²
Viewing angle	Up/Down(Degree)	20/40	20/40	70/50	65/65	65/65	65/65
	Left/Right(Degree)	45/45	45/45	70/70	60/50	65/45	75/45
Touch panel		4-wire system, analog			8-wire system, analog		
Buzzer		Magnetic buzzer					
Operation LED		Green : Run (Monitoring, download drawing data) Red : Error (Communication error, drawing data error)					
Processor		ARM920T(32bit RISC), 200MHz					
Graphic accelerator		-	Hardware accelerator				
Memory	Display data	3MB	10MB				
	Backup data	128KB	512KB (Logging, alarm data saving)				
Ethernet					1 ch, IEEE 802.3, 10/100Base-T		
USB interface		USB v1.1 Host ×1		USB v1.1 Host ×2			
Serial	RS-232C	2 ch (1 port for PC communication)					
	RS-422/485	1 ch, 422/485					
CF memory card interface		-	CF memory card (TYPE-I) ×1				
AUX interface		-	Optional				
Certification		CE, UL, MIC					
Protection		IP65F (Front Water Proof Structure)					
Size (W×H×D)mm		181.0×140.0×56.0	181.0×140.0×66.51		240.0×174.0×73.0	317.0×243.0×73.0	
Panel Cut (W×H)mm		155.5.0×123.0			228.0×158.0	294.0×227.0	
Weight (kg)		0.7	0.75	1.4		2.2	3
Power	Rated voltage	DC 24V				AC100-220V, DC24V	
	Permitted voltage	MIN 19.2 VDC, MAX 28.8 DC				AC85V-AC264V, DC19.2V-DC28V	
	Watt	5	8.5		20	37	40

Communication controller

Maker	LS PLC			
	MASTER-K Series	GLOFA-GM Series	XGK Series	XGI Series
Controller	100S/300S/200S/120S/80S	GM4/GM6/GM7U/GM7	CPUU/CPUH/CPUA/CPUS/CPUE	CPUU/CPUH/CPUA
Maker	MITSUBISHI PLC			
	MELSEC-Q Series	MELSEC-A Series		
Controller	Q02/Q02H/Q06H/ Q12H/Q25H/Q00J/ Q00J/Q01/Q02/ Q02H/Q06H/Q12H/ Q25H/Q12PH/ Q25PH	A2ACPU/A2ACPU-S1/A3ACPU/A2UCPU/A2UCPU-S1/ A3UCPU/A4UCPU/A2USCPU/A2USHCPU-S1/ A1NCPU/A2NCPU/A2NCPU-S1/A3NCPU/ A1SCPU/A1SJCPU/A1SJHCPU/A1SHCPU/A2SHCPU/ AOJ2CPU/AOJ2HCPU		
Maker	LS AC Drive			
	LS BUS / MODBUS			
Controller	SV-IG/SV-IS3/SV-IH/SV-IS5/SV-IG5/SV-IG5/SV-IC5/SV-IP5A/SV-IG5A			

Maker	OMRON PLC	AB	Other controllers
	OMRON CS-CJ	Ethernet IP	
Controller	CS1H-CPU67/65/64/63	CompactLogix	MODBUS RTU
	CS1G-CPU45/44/43/42	ControlLogix	MODBUS TCP
	CS1G-CPU45H/44H/43H/42H	MicroLogix	OEMax Controls NX700
	CS1H-CPU67H/66H/65H/63H		YASKAWA MEMOBUS RTU
	CS1D-CPU67H/65H/67S/65S/44S/42S		KDT LINK
	CJ1G-CPU45/44		MELSEC-FX LINK
	CJ1M-CPU23/22/21/13/12/11		MODBUS RTU SLAVE
	CJ1G-CPU45H/44H/42H		MODBUS TCP SLAVE
	CJ1H-CPU66H/65H		NAIS

Leading Innovation, Creating Tomorrow



Safety Instructions

- For your safety, please read user's manual thoroughly before operating.
- Contact the nearest authorized service facility for examination, repair, or adjustment.
- Please contact qualified service technician when you need maintenance.
Do not disassemble or repair by yourself!
- Any maintenance and inspection shall be performed by the personnel having expertise concerned.

© 2008.01 LS Industrial Systems Co., Ltd. All Rights Reserved.

LS Industrial Systems Co., Ltd.

www.lgis.com

■ HEAD OFFICE

LS Tower 1026-6, Hoggae-dong, Dongan-gu,
Anyang-si, Gyeonggi-do 431-848, Korea

■ Europe	+82-2-2034-4376 / ywsohn@lsgis.biz
■ Middle East	+82-2-2034-4901 / bonseongk@lsgis.biz
■ South West Asia	+82-2-2034-4645 / sungkyup@lsgis.biz
■ South East Asia	+82-2-2034-4707 / ohpark@lsgis.biz
■ CIS	+82-2-2034-4913 / jinhkang@lsgis.biz
■ America	+82-2-2034-4377 / younsul@lsgis.biz

■ Global Network

- **LS Industrial Systems (Middle East) FZE >> Dubai, U.A.E.**
Address: P.O.Box-114216, API World Tower, 303B, Sheikh Zayed Road, Dubai, U.A.E.
Tel: 971-4-886 5360 Fax: 971-4-886-5361 e-mail: hwyim@lsgis.biz
- **Dalian LS Industrial Systems Co., Ltd. >> Dalian, China**
Address: No.15, Liaohe 3-Road, Economic and Technical Development zone, Dalian 116600, China
Tel: 86-411-8273-7777 Fax: 86-411-8730-7560 e-mail: lixk@lsgis.com.cn
- **LS Industrial Systems (Wuxi) Co., Ltd. >> Wuxi, China**
Address: 102-A, National High & New Tech Industrial Development zone, Wuxi, Jiangsu, 214028, P.R.China
Tel: 86-510-8534-6666 Fax: 86-510-522-4078 e-mail: xuhg@lsgis.com.cn
- **LS-VINA Industrial Systems Co., Ltd. >> Hanoi, Vietnam**
Address: Nguyen Khe - Dong Anh - Ha Noi - Viet Nam
Tel: 84-4-882-0222 Fax: 84-4-882-0220 e-mail: srjo@lsgisvina.com
- **LS-VINA Industrial Systems Co., Ltd. >> Ho Chi Minh, Vietnam**
Address: 41 Nguyen Thi Minh Khai Str. Yoco Bldg 4th Floor, Ho Chi Minh City, Vietnam
Tel: 84-8-3822-7941 Fax: 84-8-3822-7942 e-mail: sbpark@lsgisvina.com
- **LS Industrial Systems Tokyo Office >> Tokyo, Japan**
Address: 16FL, Higashi-Kan, Akasaka Twin Tower 17-22, 2-chome, Akasaka, Minato-ku Tokyo 107-8470, Japan
Tel: 81-3-3582-9128 Fax: 81-3-3582-2667 e-mail: jschuna@lsgis.biz
- **LS Industrial Systems Shanghai Office >> Shanghai, China**
Address: Room E-G, 12th Floor Huamin Empire Plaza, No.726, West Yan'an Road Shanghai 200050, P.R. China
Tel: 86-21-5237-9977 (609) Fax: 89-21-5237-7191 e-mail: jinhk@lsgis.com.cn
- **LS Industrial Systems Beijing Office >> Beijing, China**
Address: B-Tower 17FL Beijing Global Trade Center B/D. No.36, BeiSanHuanDong-Lu, DongCheng-District, Beijing 100013, P.R. China
Tel: 86-10-5825-6025,7 Fax: 86-10-5825-6026 e-mail: cuixiaorong@lsgis.com.cn
- **LS Industrial Systems Guangzhou Office >> Guangzhou, China**
Address: Room 1403, 14F, New Poly Tower, 2 Zhongshan Liu Road, Guangzhou, P.R. China
Tel: 86-20-8326-6764 Fax: 86-20-8326-6287 e-mail: linsz@lsgis.biz
- **LS Industrial Systems Chengdu Office >> Chengdu, China**
Address: 12Floor, Guodong Building, No.52 Jindun Road Chengdu, 610041, P.R. China
Tel: 86-28-8612-9151 Fax: 86-28-8612-9236 e-mail: yangcf@lsgis.com.cn
- **LS Industrial Systems Qingdao Office >> Qingdao, China**
Address: 7B40, Haixin Guangchang Shenyue Building B, No.9, Shandong Road Qingdao 26600, P.R. China
Tel: 86-532-8501-6568 Fax: 86-532-583-3793 e-mail: lij@lsgis.com.cn

Specifications in this catalog are subject to change without notice due to continuous product development and improvement.