

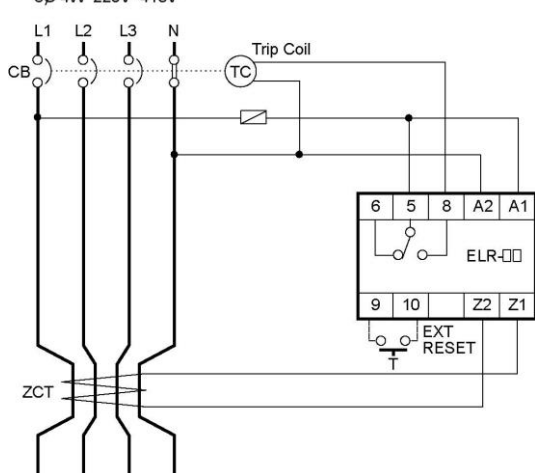
ELR Earth Leakage Relay

Features

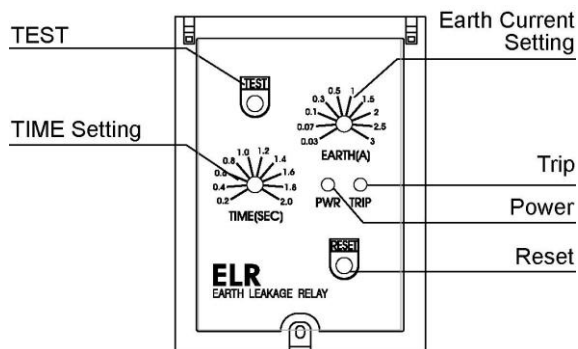
- Based on MCU(Micro Controller Unit)
- Earth Leakage Protection for personal, motor and power distribution system
- Sensing by zero phase current transformer
- A test button is provided for manual testing of relay
- Possible adjustment of input current and operating delay time with separate tap type potentiometer.
- A Green and Red are provided for indicating the status of control power input and relay operation

Typical Application

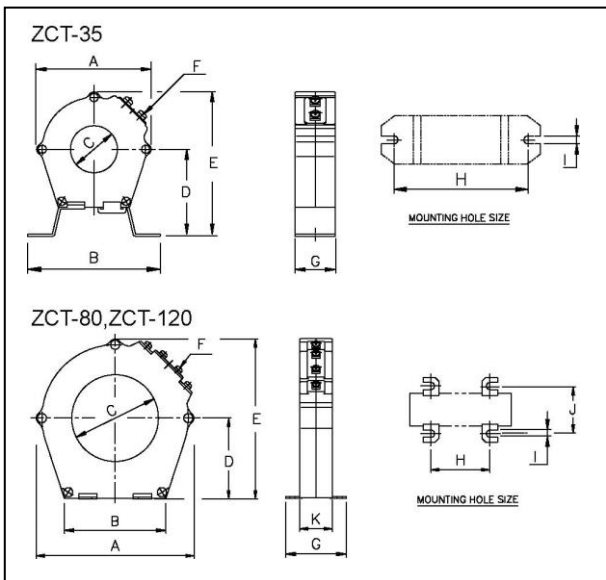
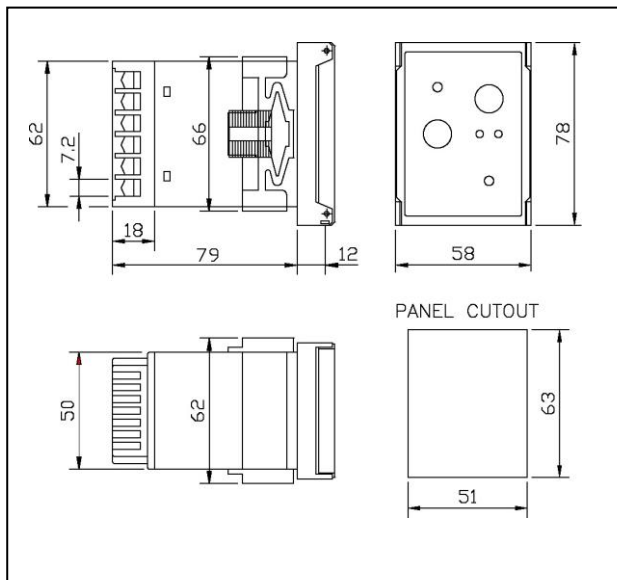
3Ø 4W 220V~415V



Relay Facia



Dimensions



Type	Applicable current	Dimension(mm)										
		A	B	C	D	E	F	G	H	I	J	k
ZCT-35	≤200A	85	99	Ø35	64	107	2-M3.5	30	83	5	-	-
ZCT-80	≤400A	145	93	Ø80	74	146	4-M3.5	56	54	5	43	30
ZCT-120	≤800A	189	126	Ø120	99	193.5	4-M3.5	56	95	5	43	30

Specifications

Description		Rating	Remarks
Current setting		0.03 to 3 Amp	0.03, 0.07, 0.1, 0.3, 0.5, 1.0, 1.5, 2.0, 2.5 and 3 Amp TAP.
Time setting		0.2 to 2.0 Sec	0.2, 0.4, 0.6, 0.8, 1.0, 1.2, 1.4, 1.6, 1.8, 2.0 sec Tap
Operating characteristic		Definite time type	
Current sensing		ZCT sensing	ZCT rating : 200mA/1.5mA
Control voltage	110VAC \pm 15%		94~126VAC
	220VAC \pm 15%		187~253VAC
Frequency		50/60Hz	
Tolerance		Current	\pm 10%
		Time	\pm 10%
Output contact	Rating	5A/250VAC	
	Type	1-SPDT(1c)	Normally Energize
Rated insulation voltage		600VAC, 50Hz	
Expected life	Mechanical	10,000,000 operation	
	Electrical	100,000 operation	
Environment	Temperature	Operation	-20°C~60°C
		Store	-30°C~80°C
	Humidity	30~85% non-condensing	
Dielectric strength		1) Between casing and circuits : 2000VAC, 50Hz, 1min 2) Between contacts : 1000VAC, 50Hz, 1min 3) Between circuits : 2000VAC, 50Hz, 1min	
Electrostatic discharge		IEC 61000-4-2 LEVEL 3	Contact : \pm 4 kV, Air : \pm 8 kV
EFT/Burst		IEC 61000-4-4 LEVEL 3	\pm 2 kV 1min
Surge		IEC 61000-4-5 LEVEL 3	\pm 2 kV(0°, 90°, 180°, 270°)
Voltage dip and interruption		IEC 61000-4-11	

Ordering Information

ELR-30 R M7

① ② ③

- ① Current Range
- ② N : Relay energized in control power applied.
R : Relay de-energized in control power applied.
- ③ Control Voltage
F7 : 110VAC, 50/60Hz
M7 : 220VAC, 50/60Hz